



MediaMapper Software

AN EASY WAY TO ADD PHOTOGRAPHIC IMAGES TO YOUR GIS DATABASE

Imagine the difference between looking at a map of cryptic symbols, and being able to see a photo of what each symbol really represents, as if you were there. That's what Trimble's MediaMapper® software let's you do—create an interactive, computerized map using digital pictures and GPS location data that you have collected in the field. You no longer have to take copious notes to describe an asset, or feature, for your geographic information system (GIS) database. Now you can take a digital picture and let MediaMapper software integrate it with GPS location data. Geographically referenced images are exported to your GIS, so information can be easily shared with colleagues and clients. It's great for asset inventory work, environmental impact assessment, habitat monitoring, archeological site mapping, and many other applications.

WHY MEDIAMAPPER SOFTWARE?

MediaMapper software adds the power of digital imagery to your GIS data collection and maintenance projects. By linking GPS position information from a Trimble GPS receiver with digital photographs, the software creates files that can be displayed along with other GIS layers. You can simply click on a map symbol to display images associated with that geographic location and view a clear visual verification of your assets.

Why GPS?

Using GPS technology is the fastest, most accurate and most cost-effective method of providing position data for the features in a GIS database. You can collect data virtually any time and anywhere in the world with a common standard of accuracy and dependability using powerful GPS systems, such as the Trimble GPS Pathfinder® and GeoExplorer® 3 systems, and a variety of differential correction sources.

IN THE FIELD

Field work couldn't be simpler—just take pictures while the GPS system records position data.

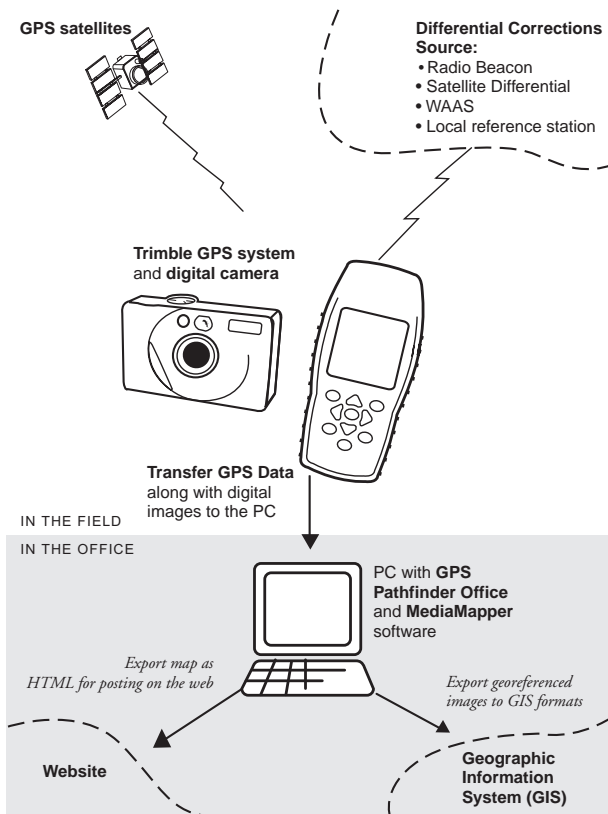
- Take the Trimble GPS Pathfinder or GeoExplorer system and a compatible digital camera into the field. The GPS system and the camera are independent of each other, with no cables between them.
- Log raw GPS data continuously, using the “Not in Feature” or “Between Feature” mode in your GPS system's datalogger.
- Take pictures of the features or sites you need to inventory.

BACK IN THE OFFICE

Operating in conjunction with Trimble's GPS Pathfinder Office software, the MediaMapper software creates the georeferenced images.

GPS Pathfinder Office software

- Use the GPS Pathfinder Office software to download the position data from your Trimble GPS Pathfinder or GeoExplorer 3 system.
- If required, differentially correct the GPS data, to improve the accuracy and consistency of the position information.
- Export the GPS data using the pre-configured MediaMapper setup.



MediaMapper software

- The MediaMapper software automatically compares the GPS position information with the images from the digital camera. Each time-stamped photograph is matched with the time-stamped data in the GPS file to determine an accurate GPS position for the photograph—thus georeferencing the image.
- View the georeferenced images in the MediaMapper map window. Click on locations on the map display to bring up associated images. You can even have multiple pictures associated with a single location, so you can see what the feature looks like from all sides.
- Output the geo-referenced images by either:
 - Exporting to a GIS format, such as the ESRI Shapefile or MapInfo MIF file formats, for integration with existing GIS data.

OR

- Creating a website directly, by outputting the georeferenced images as HTML. This is ideal for mission-critical data, such as flood damage reports or forest fire data, when you need to share information with clients, colleagues, or the public in a hurry.

MEDIAMAPPER SOFTWARE BENEFITS AND ADVANTAGES

Fast, flexible data collection

With a single snap of your digital camera, you can instantly collect accurate visual representation of the feature that can be analyzed and interpreted back in the office. The MediaMapper software operates seamlessly with Trimble GPS Pathfinder and GeoExplorer data collection systems to increase your field productivity. And as your time in the field is used more efficiently, the value of the information you collect increases.

Data compatibility

Output your data and digital images directly to ESRI Shapefile or MapInfo MIF format for easy integration with existing GIS data. Or a direct HTML output lets you post your map, with the digital photographs, on the Internet for fast sharing with your colleagues and customers.

Cable-free operation

With no cables between the Trimble GPS data collection system and your digital camera, there's no risk of getting cables snagged on branches.

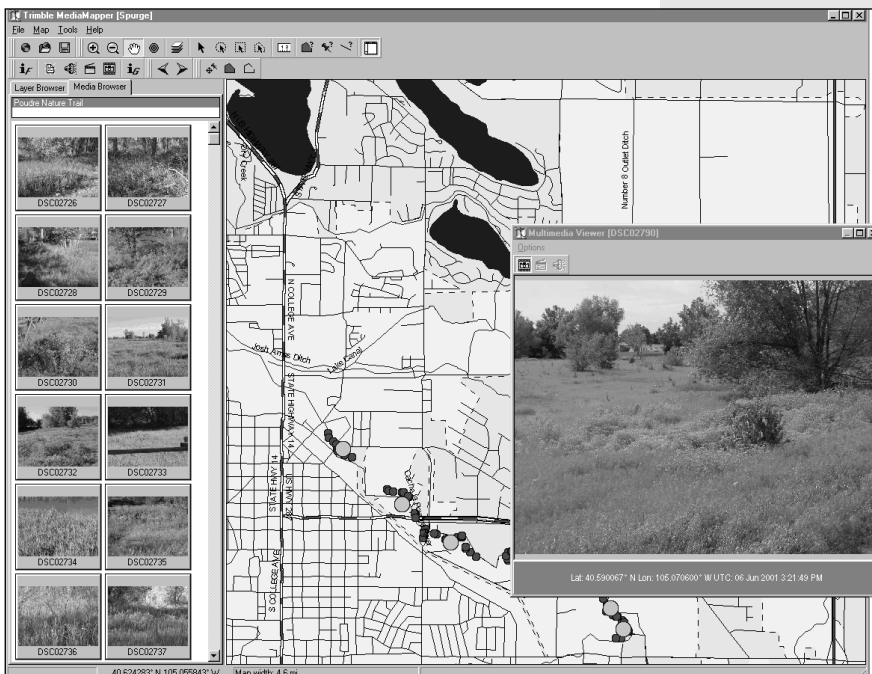
Easy to learn and use

Collecting georeferenced images requires minimal

training, and virtually no “doing” time in the field. It's an easy, one-person operation—just let the GPS system collect position information while you concentrate on taking pictures. The software does all the integration work automatically, once you're back in the office.

Affordable and unique

The MediaMapper software is a high-value addition to your mapping and GIS data collection capabilities. It's another way that Trimble gives you an extra advantage for your decision-making.



CONCLUSION

Trimble's MediaMapper software lets you add the power of digital photographs to your GPS-based mapping and GIS data collection capabilities. A photograph shows the viewer the true condition of the asset or feature, while the map provides precise location data. Working in conjunction with Trimble's GPS Pathfinder or GeoExplorer data collection systems, MediaMapper software gives you even more flexibility for collecting field data. For adding photographic images to GIS layers, or viewing geo-referenced photos on the web, there's nothing like MediaMapper software.

With MediaMapper software, your colleagues and clients will get the picture—and the point!

To learn more about Trimble's MediaMapper software, check out our world wide web site at www.trimble.com/gis, or call your local Trimble representative.

SYSTEM REQUIREMENTS

Recommended Hardware

Computer

- Pentium II or better
- 64 MB RAM
- 24 MB available hard disk space
- CD-ROM drive
- VGA/SVGA monitor, or better

Operating System

- Microsoft Windows 95, 98, 2000, Me, or NT 4.0 (service pack 4 or later)

Standard Components

- Software CD
- On-line Help system
- Operation Guide
- Release Notes

Digital Camera Compatibility

MediaMapper software is compatible with all digital cameras that use the Design rule for Camera File (DCF) system standard. DCF is a Japan Electronic Industry Development Association (JEIDA) standard, established in December 1998.



Trimble Navigation Limited
Corporate Headquarters
645 North Mary Avenue
Sunnyvale, CA 94086-3642
+1-408-481-8940
+1-408-481-7744 Fax
www.trimble.com

Trimble Navigation
Europe Limited
Trimble House
Meridian Office Park
Osborne Way, Hook
Hampshire RG27 9HX U.K.
+44-1256-760-150
+44-1256-760-148 Fax

Trimble Navigation
Singapore PTE Limited
80 Marine Parade Road
#22-06, Parkway Parade
Singapore 449269
+65-348-2212
+65-348-2232 Fax



TRIMBLE AUTHORIZED DISTRIBUTOR

