

GPS Pathfinder® Office Software

Release Notes

- **Introduction**
- **New Features and Changes**
- **Compatibility**
- **Installation**
- **Known Issues**
- **Technical Assistance**

Version 3.10
Part Number 34195-31-ENG
Revision A
April 2005



Trimble Navigation Limited
Mapping & GIS Business Area
7401 Church Ranch Blvd, Suite 100,
Westminster, CO 80021,
U.S.A.

+1-720-887-4374 Phone
+1-720-887-8019 Fax
www.trimble.com

Copyright and Trademarks

© 1999–2005, Trimble Navigation Limited. All rights reserved. For STL support, the GPS Pathfinder Office software uses the Moscow Center for SPARC Technology adaptation of the SGI Standard Template Library. Copyright © 1994 Hewlett-Packard Company. Copyright © 1996, 97 Silicon Graphics Computer Systems, Inc., Copyright © 1997 Moscow Center for SPARC Technology.

Trimble, the Globe & Triangle logo, ASPEN, Asset Surveyor, GeoExplorer, and GPS Pathfinder are trademarks of Trimble Navigation Limited, registered in the United States Patent and Trademark Office and other countries. GeoXM, GeoXT, GIS Surveyor, GPScorrect, ProXH, ProXT, TerraSync, TRS, and VRS are trademarks of Trimble Navigation Limited.

Microsoft, ActiveSync, and Windows are either registered trademarks or trademarks of Microsoft Corporation in the United States and/or other countries.

All other trademarks are the property of their respective owners.

This product is covered by the following patents: 6,144,335 and 5,928,306.

Release Notice

This is the April 2005 release (Revision A) of the *GPS Pathfinder Office Software Release Notes*, part number 34195-31-ENG. It applies to version 3.10 of the GPS Pathfinder Office software.

The following limited warranties give you specific legal rights. You may have others, which vary from state/jurisdiction to state/jurisdiction.

Software License, Limited Warranty

This Trimble software product, whether provided as a stand-alone computer software product, built into hardware circuitry as firmware, embedded in flash memory, or stored on magnetic or other media, (the "Software") is licensed and not sold, and its use is governed by the terms of the relevant End User License Agreement ("EULA") included with the Software. In the absence of a separate EULA included with the Software providing different limited warranty terms, exclusions and limitations, the following terms and conditions shall apply. Trimble warrants that this Trimble Software product will substantially conform to Trimble's applicable published specifications for the Software for a period of ninety (90) days, starting from the date of delivery.

Warranty Remedies

Trimble's sole liability and your exclusive remedy under the warranties set forth above shall be, at Trimble's option, to repair or replace any Product or Software that fails to conform to such warranty ("Nonconforming Product") or refund the purchase price paid by you for any such Nonconforming Product, upon your return of any Nonconforming Product to Trimble in accordance with Trimble's standard return material authorization procedures.

Warranty Exclusions and Disclaimer

These warranties shall be applied only in the event and to the extent that (i) the Products and Software are properly and correctly installed, configured, interfaced, maintained, stored, and operated in accordance with Trimble's relevant operator's manual and specifications, and; (ii) the Products and Software are not modified or misused. The preceding warranties shall not apply to, and Trimble shall not be responsible for defects or performance problems resulting from (i) the combination or utilization of the Product or Software with hardware or software products, information, data, systems, interfaces or devices not made, supplied or specified by Trimble; (ii) the operation of the

Product or Software under any specification other than, or in addition to, Trimble's standard specifications for its products; (iii) the unauthorized modification or use of the Product or Software; (iv) damage caused by accident, lightning or other electrical discharge, fresh or salt water immersion or spray; or (v) normal wear and tear on consumable parts (e.g., batteries). Trimble does not warrant or guarantee the results obtained through the use of the Product.

THE WARRANTIES ABOVE STATE TRIMBLE'S ENTIRE LIABILITY, AND YOUR EXCLUSIVE REMEDIES, RELATING TO PERFORMANCE OF THE PRODUCTS AND SOFTWARE. EXCEPT AS OTHERWISE EXPRESSLY PROVIDED HEREIN, THE PRODUCTS, SOFTWARE, AND ACCOMPANYING DOCUMENTATION AND MATERIALS ARE PROVIDED "AS-IS" AND WITHOUT EXPRESS OR IMPLIED WARRANTY OF ANY KIND BY EITHER TRIMBLE NAVIGATION LIMITED OR ANYONE WHO HAS BEEN INVOLVED IN ITS CREATION, PRODUCTION, INSTALLATION, OR DISTRIBUTION INCLUDING, BUT NOT LIMITED TO, THE IMPLIED WARRANTIES OF MERCHANTABILITY AND FITNESS FOR A PARTICULAR PURPOSE, TITLE, AND NONINFRINGEMENT. THE STATED EXPRESS WARRANTIES ARE IN LIEU OF ALL OBLIGATIONS OR LIABILITIES ON THE PART OF TRIMBLE ARISING OUT OF, OR IN CONNECTION WITH, ANY PRODUCTS OR SOFTWARE. SOME STATES AND JURISDICTIONS DO NOT ALLOW LIMITATIONS ON DURATION OR THE EXCLUSION OF AN IMPLIED WARRANTY, SO THE ABOVE LIMITATION MAY NOT APPLY TO YOU.

TRIMBLE NAVIGATION LIMITED IS NOT RESPONSIBLE FOR THE OPERATION OR FAILURE OF OPERATION OF GPS SATELLITES OR THE AVAILABILITY OF GPS SATELLITE SIGNALS.

Limitation of Liability

TRIMBLE'S ENTIRE LIABILITY UNDER ANY PROVISION HEREIN SHALL BE LIMITED TO THE AMOUNT PAID BY YOU FOR THE PRODUCT OR SOFTWARE LICENSE. TO THE MAXIMUM EXTENT PERMITTED BY APPLICABLE LAW, IN NO EVENT SHALL TRIMBLE OR ITS SUPPLIERS BE LIABLE FOR ANY INDIRECT, SPECIAL, INCIDENTAL OR CONSEQUENTIAL DAMAGES WHATSOEVER UNDER ANY CIRCUMSTANCE OR LEGAL THEORY RELATING IN ANY WAY TO THE PRODUCTS, SOFTWARE AND ACCOMPANYING DOCUMENTATION AND MATERIALS, (INCLUDING, WITHOUT LIMITATION, DAMAGES FOR LOSS OF BUSINESS PROFITS, BUSINESS INTERRUPTION, LOSS OF BUSINESS INFORMATION, OR ANY OTHER PECUNIARY LOSS), REGARDLESS WHETHER TRIMBLE HAS BEEN ADVISED OF THE POSSIBILITY OF ANY SUCH LOSS AND REGARDLESS OF THE COURSE OF DEALING WHICH DEVELOPS OR HAS DEVELOPED BETWEEN YOU AND TRIMBLE. BECAUSE SOME STATES AND JURISDICTIONS DO NOT ALLOW THE EXCLUSION OR LIMITATION OF LIABILITY FOR CONSEQUENTIAL OR INCIDENTAL DAMAGES, THE ABOVE LIMITATION MAY NOT APPLY TO YOU.

NOT WITHSTANDING THE ABOVE, IF YOU PURCHASED THIS PRODUCT OR SOFTWARE IN THE EUROPEAN UNION, THE ABOVE WARRANTY PROVISIONS MAY NOT APPLY. PLEASE CONTACT YOUR DEALER FOR APPLICABLE WARRANTY INFORMATION.

Introduction

Welcome to version 3.10 of the Trimble® GPS Pathfinder® Office software. This release of the GPS Pathfinder Office software contains a number of important additions and changes. Please read these release notes carefully.

When you install the GPS Pathfinder Office software version 3.10, you must choose the language that the Setup program will use to run the installation of the software. To run the GPS Pathfinder Office software version 3.10 in a language other than English, you must download and install the appropriate language files from the Trimble website. The new GPS Pathfinder Office Updater utility will help you do this; it runs towards the end of the installation process.

Similarly, to run the GPS Pathfinder Office Software Help in a language other than English, you must download and install the appropriate Help files from the Trimble website. The GPS Pathfinder Office Updater utility will display the available Help files. Help is available in English, French, German, Japanese, Portuguese, and Spanish.

The following sections contain introductory information for several languages. Further release notes in English follow these sections.

Español

Bienvenidos al software GPS Pathfinder® Office 3.10. Esta versión del software GPS Pathfinder Office contiene varias adiciones y modificaciones importantes. Se ruega que lea estas notas de lanzamiento del software con atención.

Cuando instale el software GPS Pathfinder Office 3.10, deberá elegir el idioma a utilizar por el programa de instalación para ejecutar la instalación del software. Para ejecutar el software GPS Pathfinder Office 3.10 en otro idioma distinto del inglés, deberá descargar del sitio web de Trimble los archivos de idioma pertinentes e instalarlos en su computadora. La nueva utilidad GPS Pathfinder Office Updater le ayudará a hacerlo; ésta se ejecuta en la fase final del proceso de instalación.

De forma similar, para ejecutar la ayuda de GPS Pathfinder Office 3.10 en otro idioma que no sea el inglés, deberá descargar del sitio web de Trimble los archivos de ayuda pertinentes e instalarlos en su computadora. La utilidad GPS Pathfinder Office Updater mostrará los archivos de ayuda disponibles. La ayuda está disponible en inglés, español, francés, alemán, japonés y portugués.

Português

Bem-vindo ao software GPS Pathfinder® Office 3.10. Este lançamento do software GPS Pathfinder Office contém uma série de importantes acréscimos e mudanças. Leia estas notas com cuidado.

Ao instalar o software GPS Pathfinder Office 3.10, deve-se escolher o idioma que o programa Configuração usará para executar a instalação do software. Para executar o software GPS Pathfinder Office 3.10 num idioma que não seja o inglês, deve-se fazer um download e aplicar os arquivos apropriados do idioma a partir do site de Internet da Trimble. A nova utilidade Updater do GPS Pathfinder Office o ajudará fazer isso quando é executada na parte final do processo da instalação.

Igualmente, para executar a Ajuda do GPS Pathfinder Office 3.10 num idioma que não seja o inglês, deve-se fazer um download e aplicar os arquivos de Ajuda apropriados a partir do site de Internet da Trimble. A utilidade Updater do GPS Pathfinder Office exibirá os arquivos de Ajuda disponíveis. A Ajuda está disponível em inglês, francês, alemão, japonês, português e espanhol.

Français

Bienvenue dans le logiciel GPS Pathfinder® Office 3.10. Cette version du logiciel GPS Pathfinder Office comprend quelques additions et modifications importantes. Veuillez lire ces notes de version attentivement.

Lors de l'installation du logiciel GPS Pathfinder Office 3.10, il faut choisir quelle langue le programme d'installation utilisera pour exécuter l'installation du logiciel. Afin d'exécuter le logiciel GPS Pathfinder Office 3.10 dans une langue autre que l'anglais, vous devez

télécharger et appliquer les fichiers de langue appropriés du site Web de Trimble. Le nouvel utilitaire Updater de GPS Pathfinder Office vous aidera à le faire; il s'exécute vers la fin du procédé d'installation.

Egalement, afin d'exécuter l'Aide de GPS Pathfinder Office 3.10 dans une langue autre que l'anglais, il faut télécharger et appliquer les fichiers d'aide appropriés du site Web Trimble. L'utilitaire Updater de GPS Pathfinder Office affichera les fichiers d'aide disponibles. L'Aide est disponible en anglais, français, allemand, portugais, japonais et espagnol.

Deutsch

Willkommen zur GPS Pathfinder® Office 3.10-Software. Diese Ausgabe der GPS Pathfinder Office-Software enthält eine Anzahl wichtiger Ergänzungen und Änderungen. Bitte lesen Sie diese Ausgabehinweise sorgfältig.

Wenn Sie die GPS Pathfinder Office 3.10-Software installieren, müssen Sie die Sprache wählen, die das Setup-Programm verwenden soll, um die Installation der Software auszuführen. Um die GPS Pathfinder Office 3.10-Software in einer anderen Sprache als Englisch auszuführen, müssen Sie die entsprechenden Sprachdateien von der Trimble-Webseite herunterladen und installieren. Das neue Updater-Programm für GPS Pathfinder Office hilft Ihnen dabei; es wird am Ende des Installationsvorganges ausgeführt.

Um die Hilfe von GPS Pathfinder Office 3.10 in einer anderen Sprache als Englisch auszuführen, müssen Sie die entsprechenden Hilfedateien auf die gleiche Weise von der Trimble-Webseite herunterladen und installieren. Das Updater-Programm für GPS Pathfinder Office zeigt die verfügbaren Hilfedateien an. Hilfe ist verfügbar in deutsch, englisch, französisch, japanisch, portugiesisch und spanisch.

Русская версия

Добро пожаловать в наш программный продукт GPS Pathfinder® Office 3.10. Эта реализация продукта GPS Pathfinder Office содержит несколько важных дополнений и изменений. Просим вас внимательно прочесть эти замечания.

Когда вы устанавливаете продукт GPS Pathfinder Office, вам следует выбрать язык, который будет использоваться при работе установочной программы. Для обеспечения работы продукта GPS Pathfinder Office на любом языке, кроме английского, вы должны загрузить соответствующие файлы языковой поддержки из веб-сайта Trimble. Новая утилита GPS Pathfinder Office Updater поможет вам это сделать; она работает до конца установочного процесса.

Подобным образом для работы GPS Pathfinder Office 3.10 Help на любом языке, кроме английского, вам следует загрузить и применить соответствующие файлы Help (Помощь) из веб-сайта Trimble. Утилита GPS Pathfinder Office Updater покажет имеющиеся файлы Help. Помощь доступна на английском, французском, немецком, японском, португальском и испанском языках.

日本語での紹介

GPS Pathfinder® Office 3.10 ソフトウェアによろこそ。GPS Pathfinder Office ソフトウェアの今回のリリースには、数多くの追加や変更が含まれています。リリースノートをしていねいにお読みください。

GPS Pathfinder Office 3.10 ソフトウェアのインストール時にはセットアッププログラムがソフトウェアのインストールを実行するのに使用する言語を選択する必要があります。GPS Pathfinder Office 3.10 ソフトウェアを英語以外の言語で実行するには、トリンブル社のウェブサイトから適切な言語ファイルをダウンロードして適用する必要があります。新しいGPS Pathfinder Office Updater ユーティリティがこれを行うための手助けとなります。それはインストール手順の後半に実行されます。

それと同様に、GPS Pathfinder Office 3.10 ヘルプを英語以外の言語で 実行するには、トリンブル社のウェブサイトから適切なヘルプファイルをダウンロードして適用する必要があります。GPS Pathfinder Office Updater ユーティリティが利用可能なヘルプファイルを表示します。ヘルプは、日本語、英語、フランス語、ドイツ語、ポルトガル語、スペイン語で利用可能です。

한국어 안내

GPS Pathfinder® Office 3.10 소프트웨어를 이용해 주셔서 감사합니다. 이번에 출시된 버전에는 중요한 사항이 많이 추가/변경되었습니다. 이 릴리스 노트를 숙독하시기 바랍니다.

GPS Pathfinder Office 3.10 소프트웨어를 설치할 때, 이 설치 작업에 쓸 언어를 반드시 선택하여야 합니다. 영어 이외의 다른 언어로 GPS Pathfinder Office 3.10 소프트웨어를 실행하기 위해서는 해당 언어 파일을 Trimble 웹사이트에서 다운로드 받아 적용하여야만 합니다. 이 일은 설치 작업의 최종 단계에서 구동하게 되는 새 GPS Pathfinder Office Updater 유틸리티를 이용하여 처리하면 편리합니다.

마찬가지로, 영어 이외의 다른 언어로 GPS Pathfinder Office 3.10 도움말을 실행하려면 해당 도움말 파일을 Trimble 웹사이트에서 다운로드 받아 적용하여야만 합니다. 이용 가능한 도움말 파일은 GPS Pathfinder Office Updater 유틸리티에서 표시되게 됩니다. 이용 가능한 도움말 언어는 영어, 프랑스어, 독일어, 일본어, 포르투갈어, 스페인어입니다.

中文引言

欢迎使用 GPS Pathfinder® Office 3.10 软件。这次发行的 GPS Pathfinder Office 软件增加和变更了大量重要内容。请仔细阅读本发行说明。

当您安装 GPS Pathfinder Office 3.10 软件时，您必须选择安装软件使用的语言。要使用非英语运行 GPS Pathfinder Office 3.10 软件时，您必须从 Trimble 网下载和应用相应的语言文件，新 GPS Pathfinder Office Updater 程序帮助您完成此全部安装工作。

同样，要运行使用非英语 GPS Pathfinder Office 3.10 帮助程序，您必须从 Trimble 网下载和应用相应语言的帮助文件。GPS Pathfinder Office Updater 程序将显示可利用的帮助文件。可利用的帮助文件有英语，法语，德语，日语，葡萄牙语，西班牙语。

New Features and Changes

The following new features are included in the GPS Pathfinder Office 3.10 software:

- The new Differential Correction wizard replaces the Differential Correction utility, for standard code processing or carrier processing for a float solution. You can also use the wizard to process data collected with a Trimble receiver using H-Star technology, such as the GPS Pathfinder ProXH receiver, to obtain better accuracy.
- The Differential Correction utility is retained for processing of data to produce carrier fixed solutions using Centimeter Processing. To open the Differential Correction utility, open the GPS Pathfinder Office software and select Other / Differential Correction Classic.... The Help for the Differential Correction utility is not included in the main GPS Pathfinder Office Help. To access the Differential Correction Utility Help, click the Help button in any dialog of the utility.
- The Differential Correction wizard produces an improved Differential Correction Report that shows a summary of the estimated accuracy ranges for the corrected positions, to provide immediate feedback on the success of the processing. For example, if too few base providers have been selected for multi-base processing, the results will indicate this by showing large estimated accuracy values.
- The Batch Processor utility has been updated with additional property pages for differential correction. The options available match the options and settings in the new Differential Correction wizard.
- The Base Provider list in the Differential Correction wizard has been updated to show different integrity index types, depending on the type of data collected at the base station. These types are:
 - Code
 - Single Frequency Carrier

-
- Dual Frequency Carrier
 - The WGS-84 reference frame has been updated and aligned with the global International Terrestrial Reference Frame (ITRF) definition. For GPS purposes, the WGS-84 and the ITRF-00 reference frames are the same. Reference frames for system-defined base providers in the base provider list are now provided using the ITRF reference frame.
 - The real-time WAAS correction option has been changed throughout GPS Pathfinder Office to real-time SBAS. SBAS (Satellite Based Augmentation Systems) incorporates other regional systems, including WAAS, EGNOS, and MSAS. SBAS status is reported in the Position Properties dialog of the main program, the SSF Record Editor and the Export utility.
 - The Configuration Manager utility has been updated so you can now create a configuration file for the TerraSync™ software, version 2.50 or later. You can configure which satellites the TerraSync software must track, or more easily configure Bluetooth connections using the expanded list of serial communication ports, and Bluetooth Serial Ports (BSPs).
 - SNR values for TerraSync software files are now stored and displayed as Carrier-to-Noise ratio (C/No) values, measured in decibel-Hertz (dBHz). Previously, signal-to-noise ratio (SNR) values were stored and displayed as Amplitude Measurement Unit (AMU) values.
 - The Data Transfer utility has been updated so you can transfer some file types to any storage location on a GIS datalogger on Windows CE device running version 2.50 and later of the TerraSync software.

For detailed information about these features, refer to the *GPS Pathfinder Office Software Getting Started Guide* and the GPS Pathfinder Office Software Help.

Compatibility

This release of the GPS Pathfinder Office software is compatible with the following current Trimble GPS systems:

- 5700 GPS or 5800 GPS receiver, or Trimble R7 or R8 GPS system with TerraSync™ software
- a GeoExplorer® series handheld (a GeoXT™ or a GeoXM™ handheld) with TerraSync software or the GPSCorrect™ extension for ESRI®ArcPad™ software
- a GPS Pathfinder Pro series receiver (a ProXH™, ProXT™, Pro XRS, Pro XR, Pocket, or Power receiver), with TerraSync software or the GPSCorrect extension for ESRI ArcPad software
- Trimble Reference Station (TRS™)
- GPSBase software

This release of the GPS Pathfinder Office software is also compatible with the following obsolete Trimble GPS systems:

- 4800/4700/4600/4400/4000 RTK with Asset Surveyor® or ASPEN® field software
- GeoExplorer 3, GeoExplorer II, and GeoExplorer data collectors
- GIS Surveyor™ software
- GPS Pathfinder Basic Series
- GPS Pathfinder Card receiver with ASPEN software
- GPS Pathfinder Community Base Station (CBS)
- GPS Pathfinder Pro XL receiver with Asset Surveyor or ASPEN software

Installation

This section describes how to install the GPS Pathfinder Office software, version 3.10.

To install the GPS Pathfinder Office software, you will need:

- the *GPS Pathfinder Office Software CD*
- proof-of-purchase number (located on the *GPS Pathfinder Office Software CD*)
- a computer that meets the minimum hardware and software requirements, described below

Hardware and Software Requirements

The minimum hardware and software requirements to ensure successful operation of the GPS Analyst extension are:

- a Pentium PC 133 MHz
- 32 MB RAM and 160 MB of free disk space for a standard installation (with space for data files)
- one of the following Microsoft operating systems:
 - Windows NT 4.0 (SP 6)
 - Windows 2000 Professional
 - Windows XP Home Edition
 - Windows XP Professional Edition
 - Windows XP Tablet PC Edition
- Internet Explorer version 5.0 or later
- an RS232 serial port (for communicating with a field computer running data collection software)

Note – *To transfer files to or from a CE device, you must also have the appropriate version of the Microsoft ActiveSync technology installed on your PC or Tablet PC.*

Registering the GPS Pathfinder Office Software

When you register your copy of the GPS Pathfinder Office software, Trimble gives you a serial number to use when you install the GPS Pathfinder Office software. Trimble recommends that you register before beginning installation.

To register, you need:

- the proof-of-purchase number from the GPS Pathfinder Office software packaging
- Internet access (including a valid e-mail address)

Note – *If you do not have Internet access, contact your local Trimble dealer for assistance.*

To register your copy of the GPS Pathfinder Office software:

1. Insert the *GPS Pathfinder Office Software CD* in the CD drive of the office computer.

The Setup screen appears:



2. If this screen does not appear, select *setup.exe* from the CD drive folder.
3. Click *Register*.

The Registration page opens in your default Web browser.

4. Follow the instructions on the screen to register. You will need to enter the proof-of-purchase number.

When you have successfully completed registration, your account summary appears. The Product Details section displays all the products that you have registered. Click the + beside the copy of the GPS Pathfinder Office software that you have just registered. The *Software Install Serial Number* field shows the installation serial number for your copy of the GPS Pathfinder Office software.

Note – *If you are entitled to an upgrade from a previous version of the GPS Pathfinder Office to version 3.10, you can install GPS Pathfinder Office version 3.10 using the serial number and authorization key that are attached to the original GPS Pathfinder Office CD case. If the installation program does not accept this serial number and authorization key, contact your local Trimble dealer to obtain a valid proof-of-purchase number. If you are **not** entitled to an upgrade, the installation program will not accept your serial number and authorization key. Contact your local Trimble dealer to purchase an upgrade option.*

Security keys

Versions of the GPS Pathfinder Office software that are older than 2.50 require security keys. If you want to keep one of these older versions on your PC even after upgrading, then leave its security key attached to your computer.



WARNING – Only attach or remove the hardware security key when the computer is shut down and powered off.

If you are running virus-scanning software that is set to check all files, Trimble recommends that you set it to check program files only while installing GPS Pathfinder Office 3.10. Otherwise, the installation may run very slowly.

Installing the GPS Pathfinder Office software

To install the GPS Pathfinder Office software, the PC must meet the minimum specifications for installing the GPS Pathfinder Office software. For more information, see [Hardware and Software Requirements](#), page 13.

The PC must also either have a CD-ROM drive, or have access to a CD-ROM drive over a network.

To install the GPS Pathfinder Office software, or to upgrade your current version of the extension to version 3.10:

1. Make sure that you have registered your copy of the software. For more information, see [Registering the GPS Pathfinder Office Software](#), page 14.
2. Make sure that you have any existing copy of the GPS Pathfinder Office software.
3. Insert the *GPS Pathfinder Office Software CD* in the CD drive of the office computer.

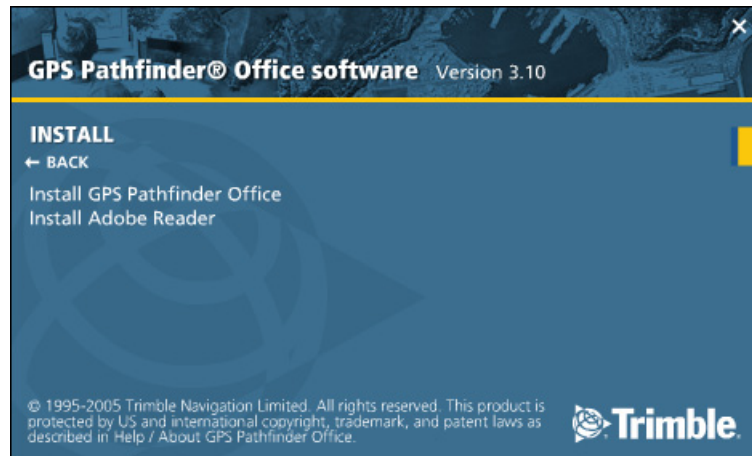
The Setup screen appears:



If this screen does not appear, select setup.exe from the CD drive folder.

-
4. Click *Install*.

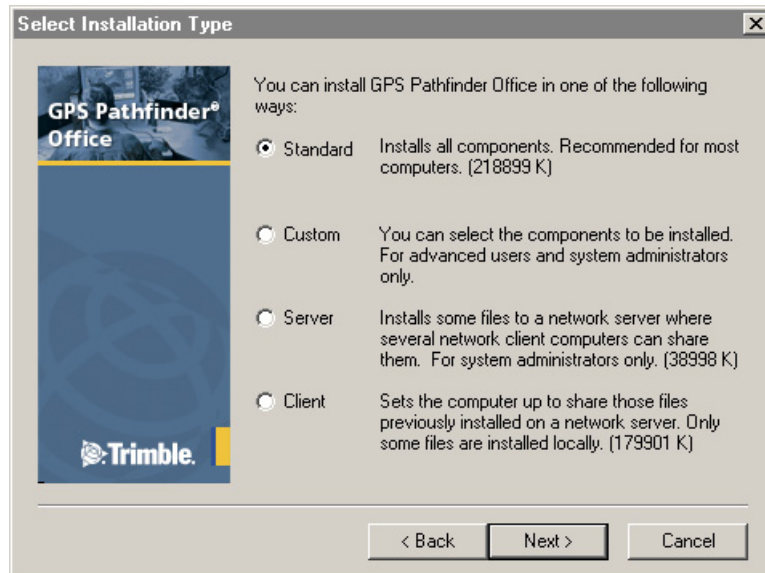
The Installation screen appears:



5. Click *Install GPS Pathfinder Office*.
6. The GPS Pathfinder Office installation wizard appears.
7. Select the language that you require to run the installation. To run the rest of the GPS Pathfinder Office software in a language other than English, you must download the appropriate language update from the Web. For more information, see [Known Issues](#), page 23.
8. Click **Next**. Follow the instructions on the screen to step through each page of the installation wizard. Installation type and settings options are described below.

Installation type options

When the installation type page appears, you must select the type of installation you want to perform.



- To install the default installation of the software, select *Standard*.
- To perform a custom installation of the software:
 - a. select *Custom* and click **Next**.
 - b. In the list of components, clear the check box beside any components you do not want to install. By default, all components are selected; this is equivalent to performing a *Standard* installation.
 - c. In the *Destination Directory* field, select the folder where the software components will be installed and click **Next**.

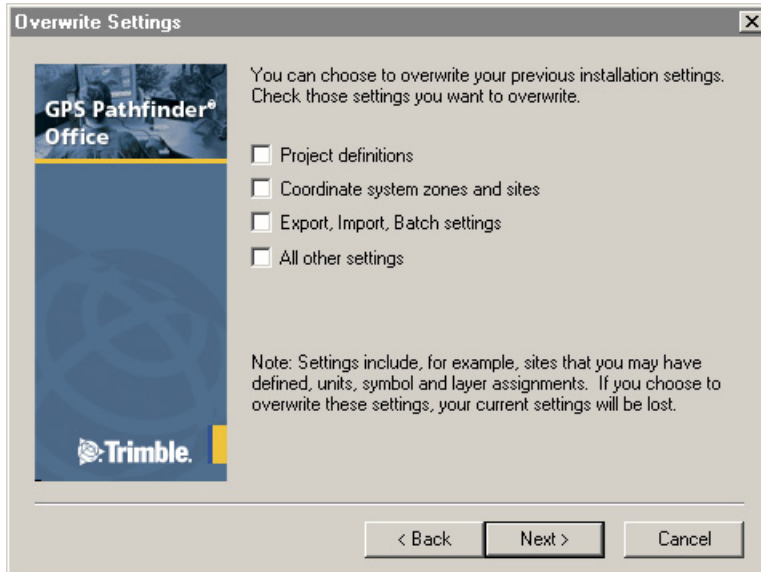
-
- d. If you have not installed the GPS Pathfinder Office software or any other Trimble software product before, specify where to install common components used by the GPS Pathfinder Office software and other Trimble software products, and then click **Next**.
- To perform a network server installation:
 - a. Select the *Server* option and click **Next**.
 - b. In the *Directory* group, select the folder on the network where the GPS Pathfinder Office software will be installed.

Shared files, such as program files, will be stored on the network.
 - To perform a network client installation:
 - a. Select the *Client* option and click **Next**.
 - b. In the *Directory* group, select the folder on the network where you have installed the GPS Pathfinder Office software shared files.

The GPS Pathfinder Office software will install the client components in the common area of your hard drive.

Settings options

If the GPS Pathfinder Office software is already installed on your computer, the following page of the installation wizard appears:



1. If you want to overwrite the settings defined in a previously installed version of the GPS Pathfinder Office software, select the check boxes beside those settings. **Do not select any settings you want to keep.**
 - Select the *Project definitions* check box to install new GPS Pathfinder Office project definitions. Any project definitions that have been created in a previous installation of the GPS Pathfinder Office software will be overwritten. The data in those project folders is not deleted.
 - Select the *Coordinate system zones and sites* check box to overwrite all coordinate systems. **Do not select** this check box **if you have created custom coordinate systems.**

-
- Select the *Export, Import, Batch settings* check box to overwrite all export, import, and batch settings. **Do not select this check box if you have created custom export, import, or batch settings.**
 - Select the *All other* settings check box to overwrite custom icons for points and the default window settings.
2. Click **Next**.
The *Upgrade Coordinate Systems* dialog appears. Select the check box to upgrade coordinate system zones and sites.
 3. Click **Next**.

Updating the GPS Pathfinder Office software

If system files have been updated during the installation process, the *Updated files* page appears showing the names and locations of files that have been updated. Backup copies of the original system files are made.

At the end of the installation process, the *Check for Updates* page appears.

1. Select one of the following options and then click **Next**:
 - *Check for updates now*
Select this option to check the Trimble website **now** for the latest GPS Pathfinder Office software, documentation, and language updates. (You must have an Internet connection.)
The GPS Pathfinder Office Updater utility starts.
 - *Check for updates later*
Select this option to check the Trimble website **later** for the latest GPS Pathfinder Office updates. (To do this, from the Windows *Start* menu select *Programs / GPS Pathfinder Office 3.10. / GPS Pathfinder Updater*, or from the GPS Pathfinder Office software select *Help / Check for new GPS Pathfinder Office updates now*.)

For more information about the GPS Pathfinder Updater utility, refer to the Help.

After restarting the computer, you can run the GPS Pathfinder Office software.

Known Issues

This section describe issues that were apparent at the time of release of GPS Pathfinder Office software version 3.10.

Differential Correction

- When running the Differential Correction wizard on a Tablet PC using the Microsoft Windows XP operating system, you may encounter problems with selecting SSF files for differential correction. This problem is resolved by installing Windows XP Service Pack 2 onto the Tablet PC.

VRS

- Positions collected using a receiver without H-Star technology that have been corrected in real time using VRS may be less accurate after postprocessing using the Differential Correction wizard. This is because the Differential Correction wizard uses a single base station, which is usually farther from the rover than the VRS. Data that has had realtime VRS corrections applied may not require postprocessing.

Technical Assistance

The documentation for the GPS Pathfinder Office software should be your first point of reference if you have problems using GPS Pathfinder Office software. The *GPS Pathfinder Office Software Getting Started Guide* contains chapters describing the GPS Pathfinder Office software interface, and provides a tutorial explaining the main functionality provided. The GPS Pathfinder Office Software Help provides detailed information on all windows and controls in the GPS Pathfinder Office software, as well as many 'how to' topics describing how to use the software.

If you cannot find a solution in the Help or *GPS Pathfinder Office Software Getting Started Guide*, try exiting the GPS Pathfinder Office software by selecting *File / Exit*. Then restart the software and resume working.

If you still cannot find a solution to your problem, **contact your local dealer**. Alternatively, you can request technical support using the Trimble website (www.trimble.com/support.html).